

GLD Global-type Series

Direct Drive Oil-Sealed Rotary Vacuum Pumps

World Wide type

GLD-201A

RoHS compliant 




Without thermal protector

GLD Global-type Series

Direct Drive Oil-Sealed Rotary Vacuum Pumps

World Wide type

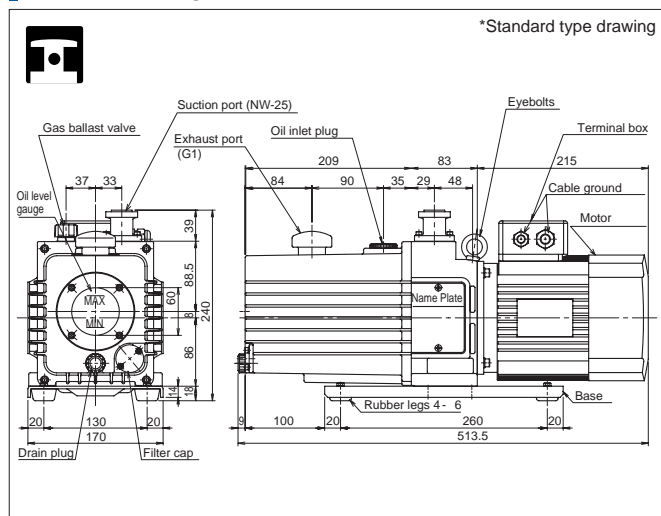
GLD-201B

RoHS compliant 

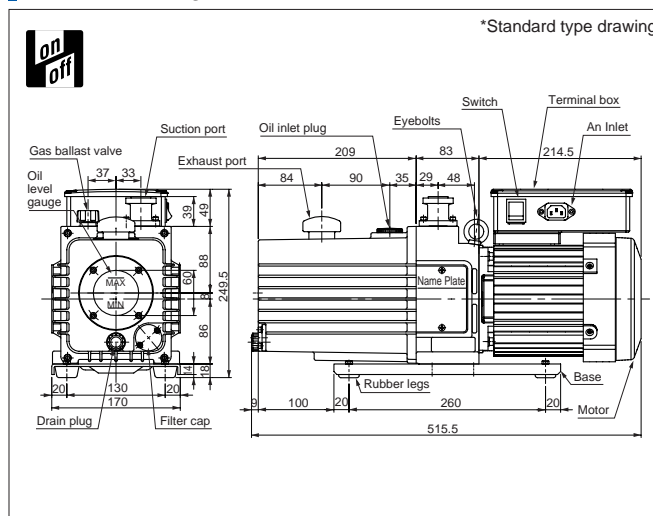


With built-in thermal protector

Outline drawing



Outline drawing



Specifications

		Unit	50Hz	60Hz
Actual pumping speed		L/min.	200	240
Ultimate pressure	G.V. Closed	Pa	6.7 x 10 ⁻²	
	G.V. Open			
Motor		Three phase, 550W, 4 poles, Multiple-range motor AC200-240V/380-460V		
Full load current	50Hz	A	3.40 (200V), 4.20 (240V), 2.10 (380V), 2.40 (415V)	
	60Hz		3.00 (200V), 3.20 (240V), 1.80 (380V), 2.10 (460V)	
Oil capacity		mL	1,100	
Recommended oil			SMR-100	
Weight		kg	28	
Inlet port diameter		mm	KF-25	
Admissible temp range		°C	7 - 40	
Dimensions		mm	170(W) x 516(L) x ca. 240(H)	

Specifications

		Unit	50Hz	60Hz
Actual pumping speed		L/min.	200	240
Ultimate pressure	G.V. Closed	Pa	6.7 x 10 ⁻²	
	G.V. Open			
Motor		Single phase, 550W, 4 poles, Multiple-range motor AC100-120V/200-240V		
Full load current	50Hz	A	8.2(100-120V)	7.9(100-120V)
	60Hz		4.1(200-240V)	3.9(200-240V)
Oil capacity		mL	1,100	
Recommended oil			SMR-100	
Weight		kg	29	
Inlet port diameter		mm	KF-25	
Admissible temp range		°C	7 - 40	
Dimensions		mm	170(W) x 515.5(L) x 249.5(H)	

Ultimate pressure is measured with Macleod gauge.