

GLD Series

Direct Drive Oil-Sealed Rotary Vacuum Pumps

Super type

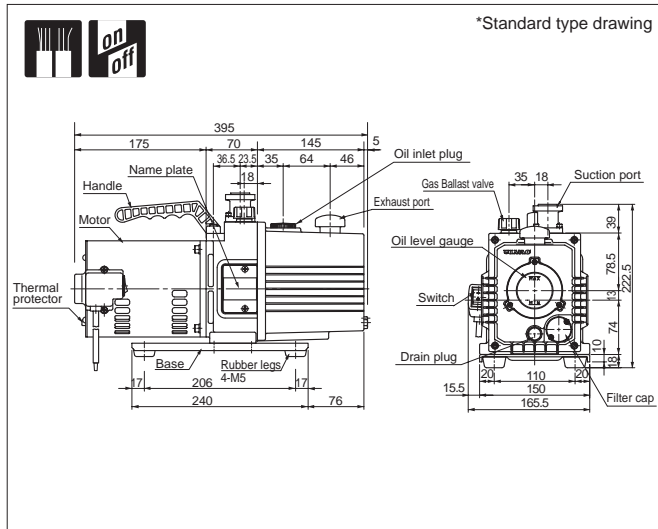
GLD-051

RoHS compliant



With built-in thermal protector

Outline drawing



*Standard type drawing

GLD Global-type Series

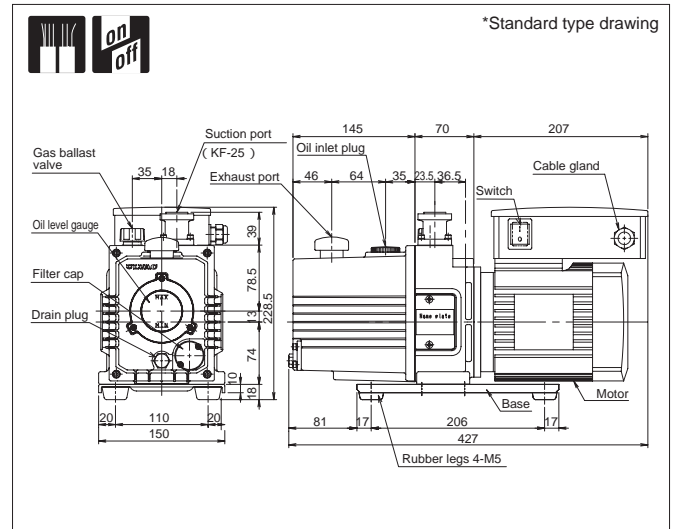
Direct Drive Oil-Sealed Rotary Vacuum Pumps

World Wide type

GLD-040

With built-in thermal protector

Outline drawing



*Standard type drawing

Specifications

	Unit	50Hz	60Hz
Actual pumping speed	L/min.	50	60
Ultimate pressure	G.V. Closed	6.7 x 10 ⁻²	
	G.V. Open		
Motor		Single phase, 100V(50/60Hz)/110V(60Hz), 200W, 4 poles, split phase starting	
Full load current	A	5.6	4.8(100V) 5.1(110V)
Oil capacity	mL	500 – 800	
Recommended oil		SMR-100	
Weight	kg	13.9	
Inlet port diameter	mm	KF-25	
Admissible temp range	°C	7 – 40	
Dimensions	mm	165.5(W) x 399(L) x 222.7(H)	

Optional voltage

Voltage	Applicable Volt	CE Marked	cTUVus Marked
Single phase, 100V	Standard	—	—
Single phase, 115V (60Hz)	Standard	—	—
Single phase, 200V	●	—	—
Single phase, 220V	●	—	—

Specifications

	Unit	50Hz	60Hz
Actual pumping speed	L/min.	40	48
Ultimate pressure	G.V. Closed	6.7 x 10 ⁻²	
	G.V. Open		
Motor		Single phase, 200W, 4 poles, Multiple-range motor Capacitor start & run, AC 100-120, 200-240V	
Full load current	50Hz	A	4.20 (100V), 4.40 (110V), 4.60 (115V), 5.05 (120V) 2.10 (200V), 2.20 (220V), 2.30 (230V), 2.60(240V)
	60Hz		3.60 (100V), 3.40 (110V), 3.40 (115V), 3.60 (120V) 1.80 (200V), 1.70 (220V), 1.70 (230V), 1.80(240V)
Oil capacity	mL	550 – 800	
Recommended oil		R-2	
Weight	kg	ac. 16	
Inlet port diameter	mm	KF-25	
Admissible temp range	°C	7 – 40	
Dimensions	mm	150(W) x 427(L) x 228.5(H)	

Ultimate pressure is measured with Macleod gauge.