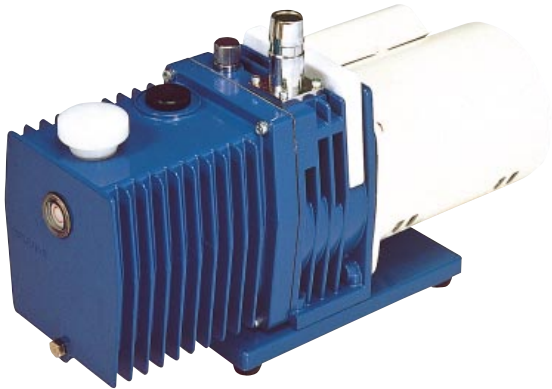


# G Series

## Direct Drive Oil-Sealed Rotary Vacuum Pumps

### Standard type

# G-100D



With built-in gas ballast valve / thermal protector

# GHD Series

## Direct Drive Oil-Sealed Rotary Vacuum Pumps

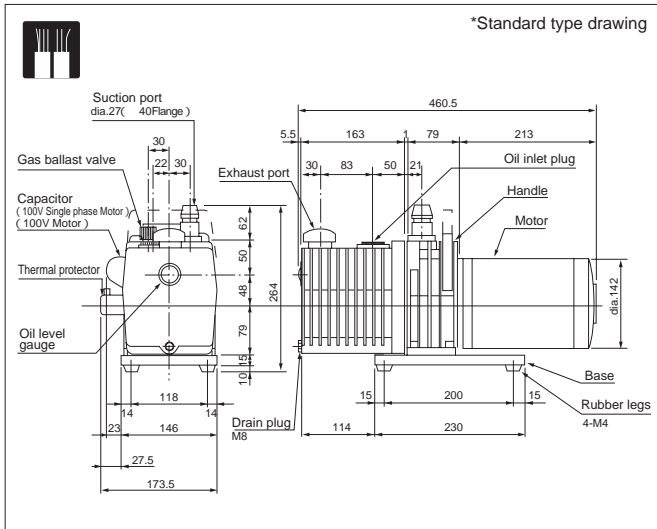
### High Speed type

# GHD-030

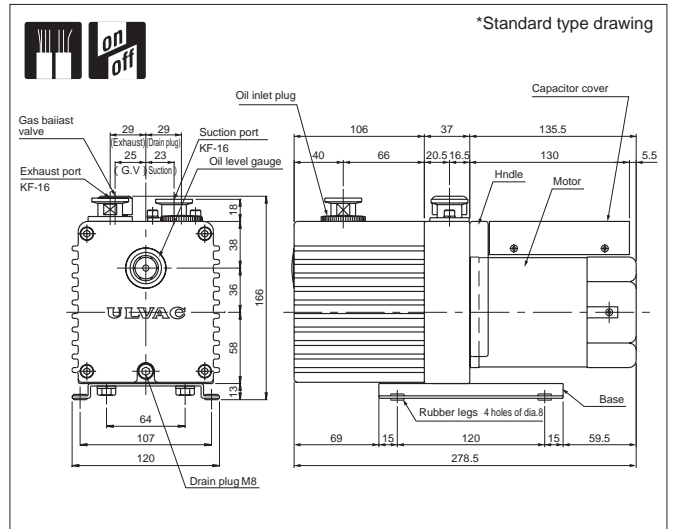


With built-in thermal protector

### Outline drawing



### Outline drawing



### Specifications

	Unit	50Hz	60Hz
Actual pumping speed	L/min.	100	120
Ultimate pressure	G.V. Closed	$6.7 \times 10^{-2}$ ( $6.7 \times 10^{-1}$ )	
	G.V. Open		
Motor		Single phase, 220V, 400W, 4 poles, capacitor starting	
Full load current	A	1.1	1.2
Oil capacity	mL	800	
Recommended oil		SMR-100	
Weight	kg	22.4	
Inlet port diameter	mm	O.D. dia.27 x I.D. dia.20	
Admissible temp range	°C	7 - 40	
Dimensions	mm	173.5(W) x 460.5(L) x 264(H)	

### Specifications

	Unit	50Hz	60Hz
Actual pumping speed	L/min.	30	36
Ultimate pressure	G.V. Closed	$6.7 \times 10^{-2}$ ( $6.7 \times 10^{-1}$ )	
	G.V. Open		
Motor		Single phase, 220V, 150W, 2 poles, capacitor run	
Full load current	A	1.1	1.2
Oil capacity	mL	600	
Recommended oil		R-2	
Weight	kg	8.7	
Inlet port diameter	mm	KF-16	
Admissible temp range	°C	7 - 40	
Dimensions	mm	120(W) x 278.5(L) x 166(H)	

### Optional voltage

Voltage	Applicable Volt	CE Marked	cTUVus Marked
Single phase, 100V	Standard	—	—
Single phase, 200V	●	—	—
Single phase, 240V	●	—	—
Three phase, 200V	●	—	—

### Optional voltage

Voltage	Applicable Volt	CE Marked	cTUVus Marked
Single phase, 100V	Standard	—	—
Single phase, 110V, 115V	●	—	—
Single phase, 200V, 220V	●	—	—
Single phase, 230V	●	—	—