

G Series

Standard type

Direct Drive Oil-Sealed Rotary Vacuum Pumps

Standard type

G-20DA



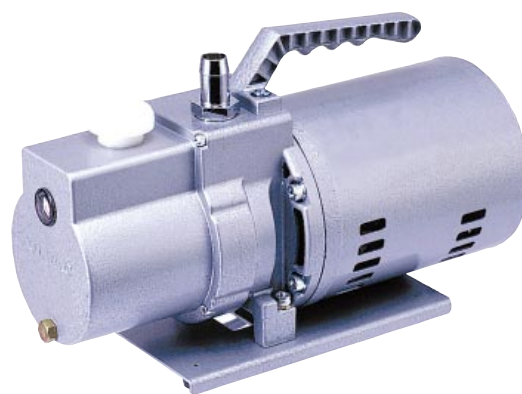
With built-in thermal protector

G Series

Direct Drive Oil-Sealed Rotary Vacuum Pumps

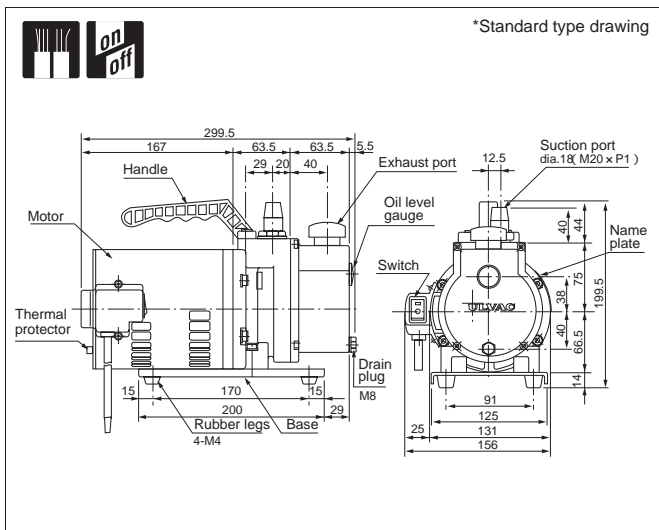
Standard type

G-50DA

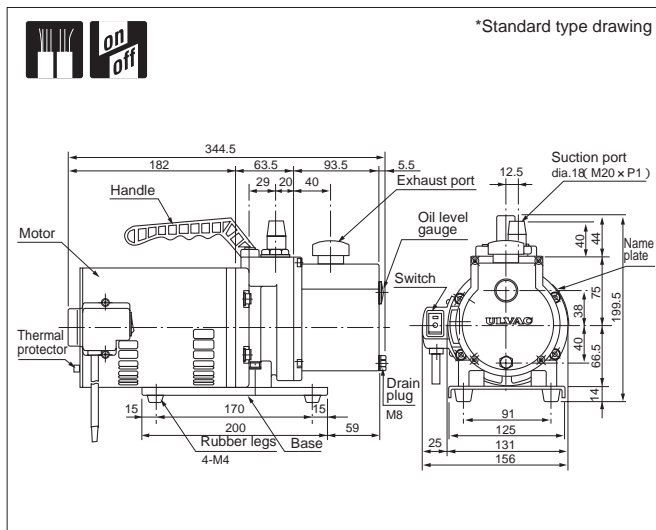


With built-in thermal protector

Outline drawing



Outline drawing



Specifications

	Unit	50Hz	60Hz
Actual pumping speed	L/min.	20	24
Ultimate pressure	Pa	1.3 x 10 ⁻¹	
Motor		Single phase, 220V, 100W, 4 poles, split phase starting	
Full load current	A	1.7	1.4
Oil capacity	mL	180	
Recommended oil		SMR-100	
Weight	kg	9	
Inlet port diameter	mm	O.D. dia.18 x I.D. dia.14	
Admissible temp range	°C	7 - 40	
Dimensions	mm	156(W) x 299.5(L) x 199.5(H)	

Specifications

	Unit	50Hz	60Hz
Actual pumping speed	L/min.	50	60
Ultimate pressure	Pa	1.3 x 10 ⁻¹	
Motor		Single phase, 200V, 200W, 4 poles, split phase starting	
Full load current	A	2.8	2.4
Oil capacity	mL	260	
Recommended oil		SMR-100	
Weight	kg	11	
Inlet port diameter	mm	O.D. dia.18 x I.D. dia.14	
Admissible temp range	°C	7 - 40	
Dimensions	mm	156(W) x 344.5(L) x 199.5(H)	

Optional voltage

Voltage	Applicable Volt	CE Marked	cTUVus Marked
Single phase, 100V	Standard	—	—
Single phase, 110V (60Hz)	●	—	—
Single phase, 115V	●	—	—
Single phase, 200V	●	—	—
Single phase, 220V-230V	●	—	—

Optional voltage

Voltage	Applicable Volt	CE Marked	cTUVus Marked
Single phase, 100V	Standard	—	—
Single phase, 110V (60Hz)	●	—	—
Single phase, 200V	●	—	—

Ultimate pressure is measured with Macleod gauge. In () shows the measurements with Pirani gauge.